



# 2027 TWIN TIERS WINTER CLASSIC

# TOURNAMENT

**FOUR GUARANTEED GAMES,  
CONCESSIONS, CHAMPIONSHIP T-SHIRTS,  
U.S. SOCCER CERTIFIED REFEREES**

**Girls**  
Saturday, 2/27

**Entry Fee**  
\$200

**Boys**  
Sunday, 2/28

**ALLEGANY COMMUNITY CENTER ARENA**

**Register Now!**

[Colton@TwinTiersSC.com](mailto:Colton@TwinTiersSC.com)

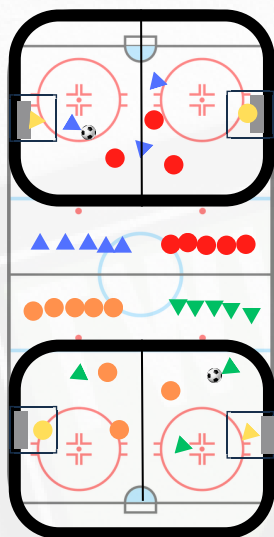
4th and 6th Grade Divisions - 4v4, incl. Goalkeeper, max of 10 players

8th Grade and HS Division - 6v6, incl. Goalkeeper, max of 12 players

Start Times: 4th Grade- 8:00am, 6th Grade- 11:20am, 8th Grade- 2:40pm

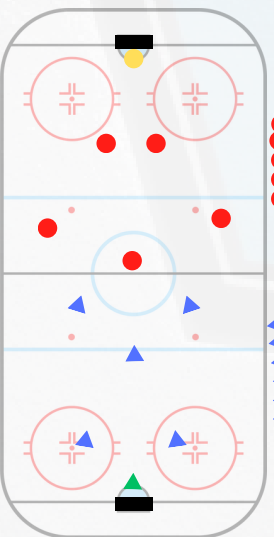
High School Division, 6:00pm

# Twin Tiers Winter Classic: G4 and G6 Format



- **Players:** 4v4 cross-court, including goalkeepers.
- **Ball:** Games are played with a futsal ball.
- **Game Duration:** 17-minute games, running clock, no halftime.
- **Substitutions:** On-the-fly substitutions are allowed.
- **Restarts:** Indirect pass-ins from the sideline when the ball goes out of bounds.
- **Walls:** Walls are in play, but if it hits the glass, it will result in an indirect free kick
- **Goals:** Games are played with futsal-sized goals.
- **Scoring System:** Win: 3 points, Tie: 1 point, Loss: 0 points. 1 additional point for a shutout, and up to 3 additional points per goal scored, resulting in a maximum of 7 potential points per game.
- **Team Roster Size:** Each team may have a maximum of 10 players on the roster.
- **Uniform Clash:** Pinnies will be provided in case of color conflicts.
- **Tie-Breaker Rules (for standings):** 1. H2H result, 2. Goal differential, 3. Total goals scored
- **Timeliness:** Teams must be ready to start at the scheduled time, otherwise the clock will begin.
- **Foul and Free Kick Rules:** All free kicks are indirect. No slide tackles are allowed.
- **Behavior Expectations:** Sportsmanship is expected from all players, coaches, and spectators. Any unsportsmanlike conduct may result in a warning or ejection.
- **Equipment:** Shin guards are mandatory and indoor footwear are mandatory.
- **Referees:** Each game will have one referee assigned by the tournament staff.
- **Penalty Kick:** A penalty kick will be awarded for a foul occurring inside the taped penalty area.

# Twin Tiers Winter Classic: G8 and HS Format



- **Players:** 6v6, including goalkeeper
- **Ball:** Games are played with a futsal ball.
- **Game Duration:** 17-minute games, running clock, no halftime.
- **Substitutions:** On-the-fly substitutions are allowed.
- **Restarts:** Direct or indirect free kicks from the spot of the foul. If the ball crosses the end line, a goal kick or corner kick will be given. Penalty kicks given for fouls inside an own team's penalty area.
- **Walls:** Side walls are in play, only below the glass. An indirect free kick will be given if the ball touches the glass or higher.
- **Goals:** Games are played with indoor-soccer sized goals.
- **Scoring System:** Win: 3 points, Tie: 1 point, Loss: 0 points. 1 additional point for a shutout, and up to 3 additional points per goal scored, resulting in a maximum of 7 potential points per game.
- **Team Roster Size:** Each team may have a maximum of 12 players on the roster.
- **Uniform Clash:** Pinnies will be provided in case of color conflicts.
- **Tie-Breaker Rules (for standings):** 1. H2H result, 2. Goal differential, 3. Total goals
- **Timeliness:** Teams must be ready to start at the scheduled time, otherwise the clock will begin.
- **Behavior Expectations:** Sportsmanship is expected from all players, coaches, and spectators. Any unsportsmanlike conduct may result in a warning or ejection.
- **Equipment:** Shin guards are mandatory and indoor footwear are mandatory.
- **Referees:** Each game will have one referee assigned by the tournament staff.